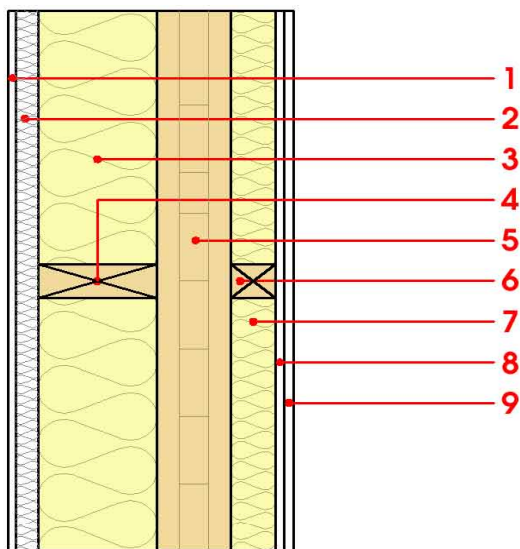


zunanja stena - masivna lesena konstrukcija, neventilirana, suha obloga, klasični omet

external wall - solid wood construction, not ventilated, with dry lining, with rendering



maksimalna višina stropa = 3,00m, maksimalna obremenitev $E_d,fi = 32,0$ KN/m
maksimum ceiling height = 3,00m, maximum load $E_d,fi = 32,0$ KN/m

Termične lastnosti <i>Thermal performance</i>	U[W/m ² K]	0,14
	Difuzna ustreznost <i>Diffusion adequate</i>	ustrezno <i>adequate</i>
	mw,B,A[kg/m ²]	19,2
Akustične lastnosti <i>Acoustic</i>	Rw (C;Ctr)	55 (-7; -15)
	Ln,w (CI)	-
vertikalne letve prbite na masivni les Rw(C;Ctr)=50(-3;-11) dB <i>vertical battens screwed onto the structural timber Rw(C;Ctr)=50(-3;-11) dB</i>		
Požarna varnost <i>Fire protection</i>	REI	60
Trajnost <i>Sustainability</i>	O13Kon	8,4

mw,B,A equivalent energy storage mass per unit area [kg/m²]
Rw (C;Ctr) Weighted sound reduction index [dB]
Ln,w (CI) Weighted Normalised Impact Sound Pressure Level [dB]
O13Kon The ecological index for construction works (70+ for standard brick structure)

#	Debelina <i>Thickness</i>	Gradbeni material <i>Building material</i>	Toplotne karakteristike <i>Thermal performance</i>				Požarna odpornost <i>Reaction to fire</i>
			λ	μ min – max	ρ	c	
1	(3,0) 7,0	zaključni omet <i>plaster</i>	1,000	10 - 35	2000	1,130	A1
2	30,0 >	lesno vlaknena izolacijska plošča <i>wood-fibre insulation board</i>	0,055	5 - 7	200	2,500	E
3	160,0	lesena masivna sušena podkonstrukcija <i>wooden solid dry construction</i>	0,130	50	500	1,600	D
4	160,0	mineralna vlaknena izolacijska plošča <i>mineral wool insulation board</i>	0,040	5 - 7	190	2,100	E
5	100,0	križno lepljena plošča <i>cross laminated timber</i>	0,130	50	500	1,600	D
6	60,0	lesena masivna sušena podkonstrukcija <i>wooden solid dry underconstruction</i>	0,130	50	500	1,600	D
7*	50,0	mineralna volna - mehka <i>mineral wool</i>	0,040	1	16	1,030	A1
8*	12,5	mavčnovlaknena plošča ₁ <i>gypsum board ₁</i>	0,250	10	800	1,050	A2
8.1*	12,5	mavčnovlaknena plošča ₂ <i>gypsum board ₂</i>	0,250	10	800	1,050	A2

₁ opcija: protipožarna mavčnovlaknena plošča / *option: gypsum plasterboard with improved properties at high temperatures*

₂ opcija / *optional*

* paket ključ / *package: key*

Masa na enoto m ² <i>Mass per unit area</i>	Ocena trajnosti <i>Sustainability rating</i>				
	GWP	AP	PEI e	EP	POCP
m	[kg CO ₂ Äqv.]	[kg SO ₂ Äqv.]	[MJ]	[kg PO ₄ Äqv.]	[kg C ₂ H ₄ Äqv.]
91,2	72,9	0,206	880,0	0,031	0,500

GWP Global warming potential

AP Acidification - tendency of component becoming acidified

PEI ne Energy consumption during manufacture - sums all renewable energy sources used

EP extent to which a substance containing nitrogen or phosphorus contributes to the production of biomass

POCP Photooxidants are a mixture of reactive gases, harmful to health, which in the presence of sunlight produce anthropogenic emissions (in particular nitrogen compounds and hydrocarbons from exhaust gases)



reddot award 2015

