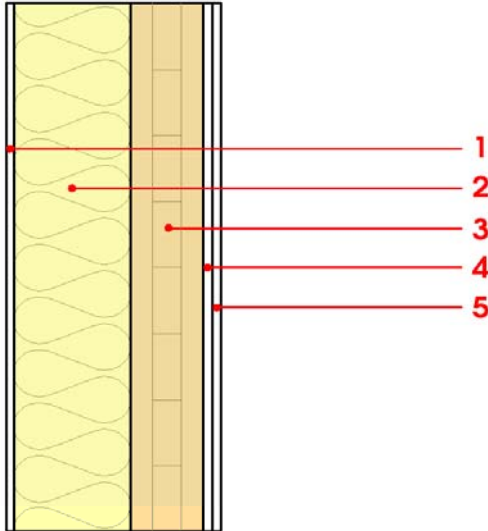


zunanja stena - masivna lesena konstrukcija, neventilirana, suha obloga, klasični omet

external wall - solid wood construction, not ventilated, with dry lining, with rendering



maksimalna višina stropa = 3,00m, maksimalna obremenitev Ed,fi = 32,0 KN/m
maksimum ceiling height = 3,00m, maksimum load Ed,fi = 32,0 KN/m

Termične lastnosti	U[W/m ² K]	0,14
Thermal performance	Difuzna ustreznost	ustrezno
	Diffusion adequate	adequate
	mw,B,A[kg/m ²]	16,5
Akustične lastnosti	Rw (C;Ctr)	39
Acoustic	Ln,w (Cl)	-
vertikalne letve prbite na masivni les Rw(C;Ctr)=50(-3;-11) dB vertical battens screwed onto the structural timber Rw(C;Ctr)=50(-3;-11) dB		
Požarna varnost	REI	60
Fire protection		
Trajnost	O13Kon	29,5
Sustainability		

mw,B,A equivalent energy storage mass per unit area [kg/m²]
Rw (C;Ctr) Weighted sound reduction index [dB]
Ln,w (Cl) Weighted Normalised Impact Sound Pressure Level [dB]
O13Kon The ecological index for construction works (70+ for standard brick structure)

#	Debelina Thickness	Gradbeni material Building material	Toplotne karakteristike Thermal performance				Požarna odpornost Reaction to fire
			λ	μ min – max	ρ	c	
1	(3,0) 7,0	zaključni omet plaster	1,000	10 - 35	2000	1,130	A1
2	160,0	izolacijska plošča insulation board	0,038	4 - 6	160	2,100	E
3	100,0	križno lepljena plošča cross laminated timber	0,130	50	500	1,600	D
4*	12,5	mavčnovlakenska plošča 1 gypsum board 1	0,250	10	800	1,050	A2
5*	12,5	mavčnovlakenska plošča 2 gypsum board 2	0,250	10	800	1,050	A2

1 opcija: protipožarna mavčnovlakenska plošča / option: gypsum plasterboard with improved properties at high temperatures

2 opcija / optional

* paket ključ / package: key

Masa na enoto m ² Mass per unit area	Ocena trajnosti Sustainability rating				
m	GWP	AP	PEI e	EP	POCP
Kg/m ²	[kg CO ₂ Äqv.]	[kg SO ₂ Äqv.]	[MJ]	[kg PO ₄ Äqv.]	[kg C ₂ H ₄ Äqv.]
69,00	-27,6	0,311	1.075,1	0,046	0,083

GWP Global warming potential

AP Acidification - tendency of component becoming acidified

PEI e Energy consumption during manufacture - sums all renewable energy sources used

EP extent to which a substance containing nitrogen or phosphorus contributes to the production of biomass

POCP Photooxidants are a mixture of reactive gases, harmful to health, which in the presence of sunlight produce anthropogenic emissions (in particular nitrogen compounds and hydrocarbons from exhaust gases)



red dot award 2015

