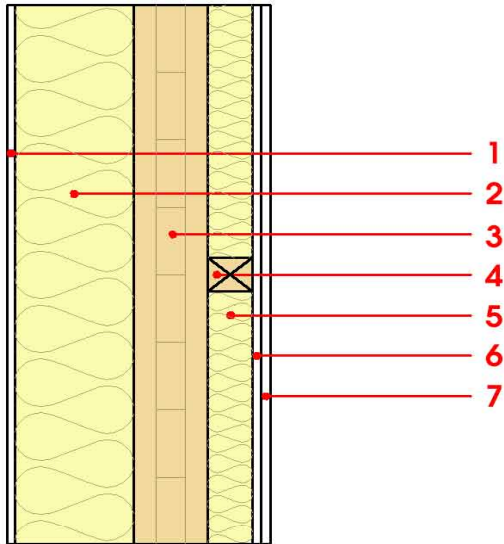


### zunanja stena - masivna lesena konstrukcija, neventilirana, suha obloga, klasični omet

### external wall - solid wood construction, not ventilated, with dry lining, with rendering



maksimalna višina stropa = 3,00m, maksimalna obremenitev Ed,fi = 32,0 KN/m  
maksimum ceiling height = 3,00m, maksimum load Ed,fi = 32,0 KN/m

<b>Termične lastnosti</b> <i>Thermal performance</i>	U[W/m <sup>2</sup> K]	<b>0.17</b>
	Difuzna ustreznost <i>Diffusion adequate</i>	ustrezno <i>adequate</i>
	mw,B,A[kg/m <sup>2</sup> ]	16,5
<b>Akustične lastnosti</b> <i>Acoustic</i>	Rw (C;Ctr)	<b>48</b>
	Ln,w (Cl)	-
vertikalne letve prbite na masivni les Rw(C;Ctr)=50(-3;-11) dB vertical battens screwed onto the structural timber Rw(C;Ctr)=50(-3;-11) dB		
<b>Požarna varnost</b> <i>Fire protection</i>	REI	<b>90</b>
<b>Trajnost</b> <i>Sustainability</i>	O13Kon	<b>35,0</b>

mw,B,A equivalent energy storage mass per unit area [kg/m<sup>2</sup>]  
Rw (C;Ctr) Weighted sound reduction index [dB]  
Ln,w (Cl) Weighted Normalised Impact Sound Pressure Level [dB]  
O13Kon The ecological index for construction works (70+ for standard brick structure)

#	Debelina <i>Thickness</i>	Gradbeni material <i>Building material</i>	Toplotne karakteristike <i>Thermal performance</i>				Požarna odpornost <i>Reaction to fire</i>
			λ	μ min – max	ρ	c	
1	(3,0) 7,0	zaključni omet <i>plaster</i>	1,000	10 - 35	2000	1,130	A1
2	160,0	mineralna vlaknena izolacijska plošča <i>mineral wool insulation board</i>	0,040	5 - 7	190	2,100	E
3	100,0	križno lepljena plošča <i>cross laminated timber</i>	0,130	50	500	1,600	D
4	60,0	lesena masivna sušena podkonstrukcija <i>wooden solid dry underconstruction</i>	0,130	50	500	1,600	D
5*	50,0	mineralna volna - mehka <i>mineral wool</i>	0,040	1	16	1,030	A1
6*	12,5	mavčnovlaknena plošča 1 <i>gypsum board 1</i>	0,250	10	800	1,050	A2
6.1*	12,5	mavčnovlaknena plošča 2 <i>gypsum board 2</i>	0,250	10	800	1,050	A2

1 opcija: protipožarna mavčnovlaknena plošča / option: gypsum plasterboard with improved properties at high temperatures

2 opcija / optional

\* paket ključ / package: key

Masa na enoto m <sup>2</sup> <i>Mass per unit area</i>	Ocena trajnosti <i>Sustainability rating</i>				
	GWP	AP	PEI e	EP	POCP
m	[kg CO <sub>2</sub> Äqv.]	[kg SO <sub>2</sub> Äqv.]	[MJ]	[kg PO <sub>4</sub> Äqv.]	[kg C <sub>2</sub> H <sub>4</sub> Äqv.]
97,00	-75,4	0,350	1.799,8	0,050	0,070

GWP Global warming potential

AP Acidification - tendency of component becoming acidified

PEI e Energy consumption during manufacture - sums all renewable energy sources used

EP extent to which a substance containing nitrogen or phosphorus contributes to the production of biomass

POCP Photooxidants are a mixture of reactive gases, harmful to health, which in the presence of sunlight produce anthropogenic emissions (in particular nitrogen compounds and hydrocarbons from exhaust gases)